



Product Overview

BUCHI Laboratory Equipment



Segments we cover




	P	C
		
	Pharma	Chemical
Solutions		
Laboratory Evaporation	•	•
Industrial Evaporation	•	•
Parallel Evaporation	•	•
Spray Drying & Encapsulation	•	•
Freeze Drying	•	•
Melting Point	•	•
Preparative Chromatography	•	•
Kjeldahl	•	-
Extraction	-	-
NIRSolutions™	•	•
NIR-Online	•	•

Solutions for numerous applications

Our solutions for laboratory, industrial and parallel evaporation, spray drying, melting point, preparative chromatography, extraction, distillation & digestion and near infrared spectroscopy meet the highest needs of our demanding customers around the globe.

Quality in your hands

All our products comply with our philosophy of “Quality in your hands”. We strive to develop products and solutions that are solid, cleverly designed, convenient and easy to use in order to fulfill customer needs to the highest degree.

F	Fe	E
		
Food	Feed	Environment
•	•	•
-	-	-
•	•	•
•	•	-
•	-	•
-	-	-
-	-	-
•	•	•
•	•	•
•	•	-
•	•	-

Close to customers

Our worldwide network of 20 subsidiaries and support centers as well as over 70 qualified distribution partners ensure proximity wherever you are.

For more information

www.buchi.com



Laboratory Evaporation

P C Fo Fe E



Rotavapor® R-300
The R-300 meets the highest expectations in convenience and versatility. Modular design allows the extension to a fully integrated system.



Rotavapor® R-100
The entry level Rotavapor® to meet the essential needs in evaporation.



Rotavapor® R-80
The R-80 is the smallest and most affordable Rotavapor® on the market, ensuring the most efficient use of lab space.



Interface I-300 Pro
The convenient interface with central touch screen control, recording and charting.



Interface I-300
The controlling unit for all process parameters.



Interface I-100
The easy to use interface to regulate the vacuum conveniently.



Interface I-80
The Interface I-80 is a suitable option for those with basic needs and is used for manual vacuum control. Thanks to the central navigation control of the Interface I-80, you can conveniently control the pump speed, and a needle valve allows fine-tuning of the final pressure.



Interface I-180
The Interface I-180 automatically controls the vacuum and has one central navigation control with which all major parameters can be set. For more flexibility, the vacuum can be controlled by targeting a set pressure or with the continuous mode.



Vacuum Pump V-600
The powerful and silent vacuum source.



Vacuum Pump V-300
The economical and silent vacuum source, optimally suited in combination with Rotavapor® R-300.



Vacuum Pump V-100
The economical and space-saving vacuum pump for essential needs.



Vacuum Pump V-80 / V-180
The Vacuum Pump V-80 / V-180 is a chemically resistant and affordable vacuum source with a compact design. The speed-control solution guarantees the vacuum pump operates quietly.



Recirculating Chiller F-3xx
The efficient way of cooling, optimally suited in combination with Rotavapor® R-300.



Recirculating Chiller F-1xx
The essential and cost-saving way of cooling.



Glass Oven G-300 Drying
Efficient drying of small samples up to 300 °C or gently under vacuum.



Glass Oven G-300 Kugelrohr
For simple and fractional distillations of small liquid volumes.

Industrial Evaporation

P C



Rotavapor® R-220 Pro
Perform large distillation processes the most economical way with up to 20 liter flask volume.



Rotavapor® R-250 Pro
Best performance and highest safety. Fast distillation of large batches in flasks of 50 litres due to high heating capacity.



Rotavapor® R-220 EX / 250 EX
Both, R-220 EX and R-250 EX, meet the newest EX regulations and fulfil the highest safety levels.



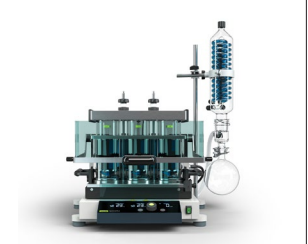
Recirculating Chiller F-325
Make the R-220 Pro independent of supply lines. Chiller, Rotavapor® R-220 Pro, and vacuum pump form one compact unit, hosted on a trolley.

Parallel Evaporation

P C Fo Fe E



Multivapor™ P-6 / P-12 stand-alone
The Multivapor™ enables neatless integration of your custom sample tubes and allows parallel evaporation of up to 12 samples.



SyncorePlus
Our SyncorePlus parallel evaporation instrument comes in two configurations; the SyncorePlus Analyst "Pre-Analytical" and the SyncorePlus Polyvap "Throughput".

Spray Drying & Encapsulation

P

C

Fo


Fe



Mini Spray Dryer S-300
With the Mini Spray Dryer S-300, BUCHI solidifies its position as a global market leader for more than 40 years. The laboratory spray dryer combines outstanding product design with unique instrument capabilities to offer a superior user experience.




Nano Spray Dryer B-90 HP
Three patented technologies enable the production of small particles and reduce R&D cost due to small sample volumes and higher yields.



Inert Loop S-395
The ideal accessory for your Mini Spray Dryer S-300 to spray dry organic solvents the safe way. Its innovative design makes spray drying of organic solvents more environmentally friendly, cost-efficient and safe.



Dehumidifier S-396
Designed to provide dry air or to enable continuous work with water and organic solvent mixtures. The accessory improves your spray drying performance, while providing stable spray drying conditions.



Encapsulator B-395 Pro
Controlled encapsulation of cells, biological and active materials for lab-scale R&D work requiring sterile conditions.



Encapsulator B-390
Facile and flexible operation of the B-390 to produce beads and capsules for numerous actives and materials.



Ultrasonic Package
Generate larger particles with the Mini Spray Dryer S-300.

Freeze Drying


P

C


Fo

Fe


E



Lyovapor™ L-200
Efficient Freeze Drying (-55 °C, 6 kg) with Infinite-Control™ including easy method creation, data logging, chart recording in real time and required interruption at anytime and anywhere.



Lyovapor™ L-250
The EcoStream™ technology paves the way to a sustainable and powerful freeze drying instrument with temperature of -85 °C. The system's remote, automatic control and modularity enhance the process efficiency to shorten drying time.




Lyovapor™ L-300
Infinite-Technology™ offers continuous sublimation with two alternate working and automatically cleaned condensers at -105 °C including the Infinite-Control™ for entire process control.

Melting Point

P

C



Melting Point M-565
Automated and reliable determination of melting and boiling points with video camera and replay function.



Melting Point M-560
Manual determination of melting and boiling points with intuitive calibration and verification procedures for highly accurate measurements.

Purification

P

C



Pure Essential Chromatography System
A flash instrument that focuses on the essentials for any basic flash application. The instrument's modular design makes it easy to take the first steps into automation.



Pure Chromatography Systems
Compact Flash & prep HPLC instruments with the highest flexibility thanks to several means of detection (UV and ELSD) and incredible pump performance.



Sepiatec SFC Systems
Extremely easy-to-use preparative SFC systems which take less space than expected. Suitable for basic to complex tasks on a small or large scale.



FlashPure cartridges
A complete range of flash cartridges enables a wide variety of particle sizes and phases and accommodates both basic and complex applications.



PrepPure columns
Developed for high-resolution prep HPLC and SFC separations. Easily scalable from 4.6 to 70mm ID and available with various phases.



GlasPure columns
Glass columns that accommodate small to large sample amounts and high-pressure work up to 50 bar (725 psi).



KjelMaster System
K-375 / K-376 / K-377
Highest productivity in steam distillation with compliant and flexible plug-and-measure titration concept (colorimetric / potentiometric).



SpeedDigester
K-439 / K-425 / K-436
Multiply the digests functionality whenever needs are changing.



K-365 Kjel Line
BUCHI's latest steam distillation units are extremely accurate, ensure the sustainable use of resources and offer maximal safety during operation.



Wet Digester B-440
Ecological pre-incineration of different types of samples.



K-365 Dist Line
The Dist Line is extremely versatile and is designed for a broad range of analytes while offering the highest operational safety.



Scrubber K-415
Four cleaning steps provide maximum safety by neutralizing poisonous fumes and reaction gases.



KjelDigester K-446 / K-449
Reduce the block digestion process by up to two hours and meet the highest safety requirements.



SpeedExtractor E-914 / E-916
Fast Pressurized Solvent Extraction (PSE) by processing up to 6 samples in parallel.



FatExtractor E-500
Quick and compliant fat extraction. Gain the flexibility to readily adapt the FatExtractor E-500 to changing needs with the user interchangeable glass assembly (SOX, HE or ECE) and execute extractions according to Soxhlet, Randall or Twisselmann.



UniversalExtractor E-800
Perfectly suited to any demanding extraction task. Six distinct extraction positions enable individual process control and simultaneous operation of different extraction methods. High-speed heaters combined with sophisticated process control allow for the fastest and most reproducible extraction processes.



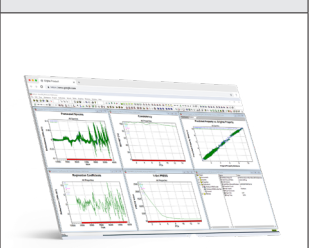
HydrolEx H-506
Performs acid hydrolysis as a sample preparation step prior to fat extraction for total fat determination. The HydrolEx H-506 offers a smooth and safe process with convenient system handling.



Mixer B-400
Combines optimal homogenization efficiency with simple operation.



ProxiMate™
ProxiMate™ is a robust, compact and easy to use at-line NIR instrument for the food and feed industry. It reduces downtime in production and provides fast quality control of batch samples.



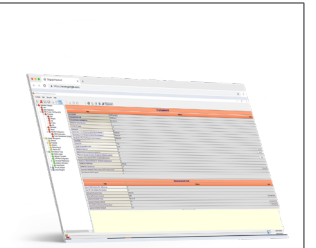
NIRCa® Chemometric Software
The powerful chemometric software package to develop robust NIR methods which lead to fast and reliable NIR prediction results.



NIRMaster™ Essential
Control the quality and nutritional facts of your feed, pet-food, milling and bakery products rapidly. The NIRMaster™ Essential is available in food-grade PMMA.



NIRFlex® N-500
Reliable analysis results for quality control and R&D with a wide range of measuring cells and accessories for highest performance.



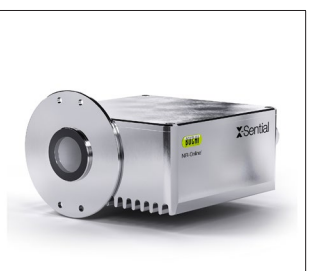
NIRWare® Software Suite
Operate BUCHI FT-NIR spectrometer without advanced expertise. The bi-directional LIMS interface allows flexible and secure data exchange with full traceability.



NIR-Online Process Analyzer
Real-time process control for demanding process applications using premium process sensors according to your production needs. The NIR-Online X-One series provides continuous and accurate measurements within seconds to guarantee maximal production efficiency.



NIR-Online Multipoint System
Control your entire process most economically – Innovative Multipoint Heads provide a cost-effective way to determine relevant production parameters.



X-Sential™
Closely monitoring basic parameters such as moisture, fat, or protein is crucial to correct deviations in manufacturing processes. The X-Sential™ has been developed and designed to be the best value, cost-efficient, fit-for-purpose process sensor.

Support and customer service
From feasibility to preventive maintenance



Profit from workshops, trainings and seminars

We regularly offer practical seminars and workshops, often in cooperation with other partners in the field of sample preparation and analysis. Customer contributions thereby underline how our solutions facilitate the daily routine. We also attend many local and international scientific and industrial congresses.

Find an overview of our activities:
www.buchi.com/knowledge/courses-trainings



Use your product most effectively

We help you to set your product properly into operation. We provide thorough Installation/Operation Qualification (IQ/OQ) services to ensure compliance with FDA, GLP/GMP standards or GAMP guidelines. Whether it is because of an initial installation, requalification or relocation, we provide professional compliance verification.

Find out more about our services:
www.buchi.com/support



Global Network

Our subsidiaries and qualified distribution partners ensure proximity where ever you are. Since we are familiar with your requirements, we use our experience and knowledge to provide first-rate solutions.

Get in touch with us:
www.buchi.com/support/buchi-worldwide

Core messages to our customers

BUCHI creates added value

“Quality in your hands” is the guiding principle that shapes our philosophy and our actions. It challenges us to provide outstanding services that are precisely tailored to your needs. This means that we must stay in close contact with our customers. That is why we keep in touch and continue to work very hard to understand you and your business even better.

We help you by providing high-quality products, systems, solutions, applications and services that offer you added value. This allows you to focus entirely on your processes and your work.



Competent

We have the technological expertise and decades of experience needed to provide competent support and work with you to continually improve our services.



Reliable

We guarantee the quality and functionality of our equipment and will continue to help you quickly and efficiently whenever something does not operate to your satisfaction.



Safe

By collaborating closely with you, we do everything in our power to make our products, systems, solutions, applications and services as safe as possible for people and the environment.



Cost-effective

We strive to create a high level of economic benefit and maximum added value for you.



Global

As an international family-owned business with own subsidiaries and qualified distributors, we have a presence wherever you are located.



Easy

We support you by providing carefully designed solutions as well as instruments and systems that are easy to operate.



Sustainable

We support environmentally friendly processes and manufacture products that have a long service life. We utilize advanced technologies to leave the smallest environmental footprint possible.

We are represented by more than 100 distribution partners worldwide.
Find your local representative at:

www.buchi.com

Quality in your hands

