



KINEMATICA

Homogenizing perfected.



POLYTRON®

LABORATORY LINE

POLYTRON® 10-35 GT

Powerful stand-disperser (Ecoline), flexible-use disperser

POLYTRON® PT 10-35 GT

Efficient and powerful.

PT 10-35 GT features high drive power and a sleek design. With its large reserve capacity, it can be used for sample with large volumes as easily as preparing samples with small volumes.

THE EXPERT FOR YOUR LABORATORY

Since more than 60 years we are perfecting the rotor / stator technology, working in close cooperation with users and universities. When using our technology, your test samples will be dispersed into homogeneous systems. Depending on the type of samples you will get homogeneous emulsions, dispersions or suspensions.

This is the best foundation for all subsequent analyses or formulations.

ERGONOMICS

- Easy operation with an on-off switch and speed control
- Intelligent variable speed control for long equipment life
- Speed stability even with changes in viscosity
- Easy to adjust motor height (depending on the stand)
- Switch aggregate quickly with Click & Go coupling
- Easy aggregate clean-up with EasyClean Design

RESULTS ARE CONVINCING

- Smallest sizes of particles / droplets: because precise analysis require homogeneous samples
- Efficient sample preparation: because fast dispersion saves time
- Standard or custom-made aggregates: perfected for and in cooperation with the users
- Cleaning and disassembly: EasyClean Design makes it very simple
- Quick coupling of the aggregates: by using Click & Go
- Best materials available: because without them, we could not call it Swiss Made
- Durability is a Swiss virtue





TECHNICAL INFORMATION

Processing volume (water)	0.1 up to 10'000 ml
Tip speed	Up to max. 34 m/s
Applicable aggregates	ø 5 mm to ø 36 mm
Speed range	500 to 30 000 rpm
Drive coupling	Aggregates with F coupling
Noise level (drive without aggregate)	75 dB(A) at 25 000 rpm 82 dB(A) at 30 000 rpm
Motor	Universal with carbon brushes
Drive power	1200 W
Connection voltage	90 – 230 V ± 10 %, 50 Hz / 60 Hz
Relative humidity (max.)	80 % during storage 80 % during operation
Operating temperature	0 – 40 °C
Protection class acc. to DIN	IP 20
Dimensions (L x W x H)	Drive: 95 x 210 x 247 mm
Weight	Drive: 3200 g
EMC standards	IEC / EN 61000-6-2 / EN 61000-6-3
Safety standard	IEC / EN 61010-2-51



USERS / APPLICATION RANGES

- General homogenizer applications
- Dispersions, suspensions, and emulsions
- Dispersion of plant, animal and human tissue samples in various liquids and volumes
- Dissolving solids even at higher viscosities
- Formulation of food products
- Formulation of lotions, creams and foodstuffs
- Extraction of active pharmaceutical ingredients (API) in pills and tablets
- Preparation of samples for quality assurance / control

This list provides a small selection of possible applications.

Kinematic dispersion.

Using the rotor / stator system.

Who is the inventor of it?

The roots of today's Kinematica began in the former chemical / physical research institute of Prof. P. Willems in Lucerne, Switzerland, the inventor of the modern rotor / stator dispersion technology.

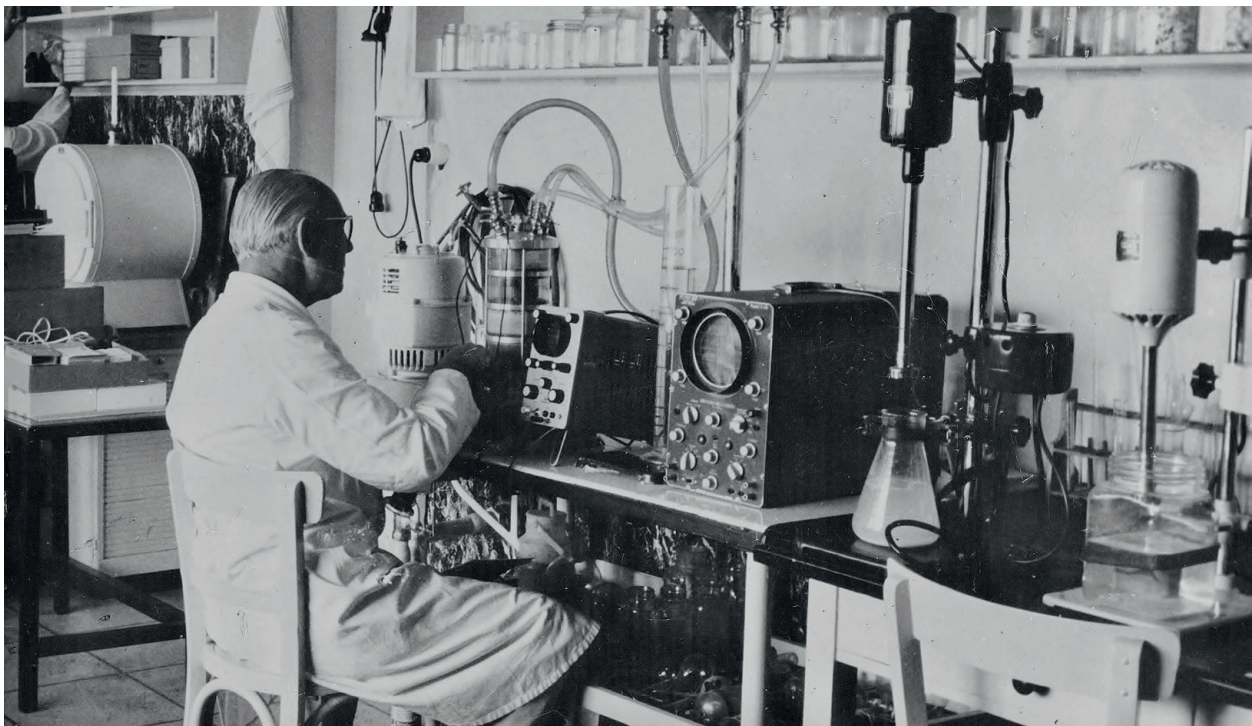
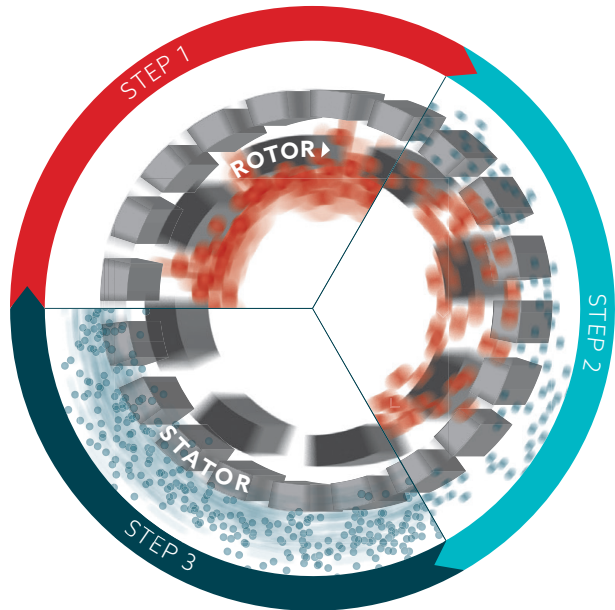
THE PRINCIPLE

The spinning rotor generates a vacuum. The sample is drawn in and discharged to the outside through the stator's slots. Between the rotor / stator (shear gap), the product is subject to high deceleration-tangential and radial acceleration forces. The individual particles / droplets are torn apart and thus reduced in size; they are reduced to several micrometers in size through additional cutting and crashing effects.

THE RESULT

Microscopic dispersions, emulsions, suspensions, and foams are generated. Droplets, particles, and gas bubbles are reduced to several micrometers or smaller. Small and large substances are dispersed more economically, faster, and better than with any other system.

Your samples are efficiently «**POLYTRONIZED**».



Aggregate Technology.

Unrivaled.

The high efficiency and the uniqueness of our POLYTRON® dispersing aggregate can only be achieved through superior manufacturing precision and the sophisticated Kinematica design method. This is 100 % Swiss Made.

STANDARD AGGREGATES (EC DESIGN, WITH TWO OR MORE SPROCKETS)

This is all you need for popular applications in the preparation of samples and formulation development. The cutting teeth embedded in the head of the tool optimize the pre-crushing of the sample. An enclosed ring design provides optimum protection for those teeth and prevents them from bending.

SPECIAL AGGREGATES (W, M, B, DS, Z DESIGN)

Specializations in the chemical, pharmaceutical, cosmetic, and food industry, as well as the life sciences, makes new designs inevitable. These aggregates are based on state-of-the-art technology and only available

from Kinematica.

The highly specialized tool is subject to further development that involves close cooperation with our customers and universities. Thus, it is continuously perfected for specific applications.

MATERIALS

Whether you need a tool with standard or special geometry, all aggregates are manufactured from high-alloy stainless steel 316L, electrolytically polished and made in Switzerland.

BEARINGS

Depending on the diameter, our aggregates are made with high-quality PTFE / VALFLON, special carbide or

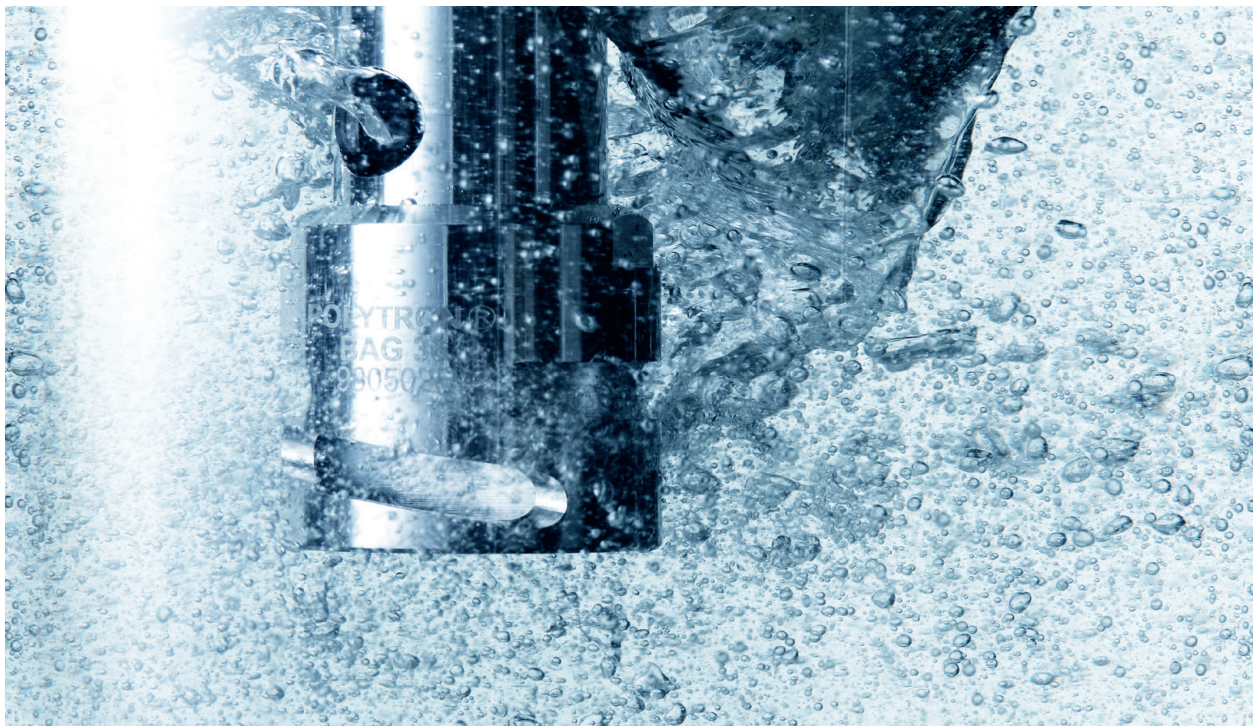
bronze / carbide bearings. They have excellent mechanical properties and chemical resistance and have FDA approvals. Super high-speed ball bearings are used in the couplings to provide stability speeds up to 30 000 rpm.

CLEANING AND DISASSEMBLY

EasyClean: Our technology ensures the simplest removal and fast cleaning, either by hand, dishwasher, or autoclave. Disassembling the precisely fitting components is simple and fast.

LOCKING SYSTEM

All our POLYTRON® aggregates are fitted with a high-precision quick-release system: The Click & Go.



Dispersing vessels.

For best results.

Choosing the right dispersing aggregate is crucial for good results. The right vessel also contributes to achieve the desired result.

THE PROBLEM

For normal cylindrical beakers, the flow creates a vortex. The mixing and dispersing efficiency decreases considerably since the product is no longer being optimally processed through the dispersing generator head. This lengthens processing times, requiring more energy input. Depending on the shape of the vortex, this may also lead to additional air being introduced.

THE SOLUTION

Our specially designed GS jars have a cloverleaf-like shape. This effectively interrupts the flow in the radial direction and generates additional counteracting forces. These high turbulences maximize the mixing and dispersion efficiency, thus minimizing processing time and requiring less energy.

THE SELECTION

Our GS-glasses are available in chemical- and temperature-resistant borosilicate glass or in stainless steel, with working volumes from a few milliliters to several liters, with or without lid and with or without sealed feedthrough.



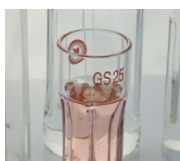
GS vessel principle (viewed from top)



CLOVERLEAF-LIKE SHAPED BOROSILICATE VESSEL

Sales No.	Product	Ø/H (mm)	Process volume	Thickness	Thread	Description
-----------	---------	----------	----------------	-----------	--------	-------------

Open on top



11051010	GS 15	30/100	35ml	2.8mm	-	-
11051011	GS 25	54/150	150ml	3.5mm	-	-
11051012	GS 40	80/200	500ml	3.5mm	-	-
11051013	GS 50	90/250	1000ml	3.5mm	-	-
11051014	GS 60	100/300	1300ml	3.5mm	-	-

With screw cap and sealing



11051020	GS 15K	30/100	35ml	2.8mm	GL25	-
11051021	GS 25K	54/150	150ml	3.5mm	GL45	-
11051022	GS 40K	80/200	500ml	3.5mm	GL45	-
11051023	GS 50K	90/250	1000ml	3.5mm	GLS80	-
11051024	GS 60K	100/300	1300ml	3.5mm	GLS80	-

Incl. cover with sealing and hole



11051030	GS 15KL08	30/100	35ml	2.8mm	GL25	8mm hole
11051031	GS 15KL12	30/100	35ml	2.8mm	GL25	12mm hole
11051040	GS 25KL12	54/150	150ml	3.5mm	GL45	12mm hole
11051041	GS 25KL20	54/150	150ml	3.5mm	GL45	20mm hole
11051050	GS 40KL20	80/200	500ml	3.5mm	GL45	20mm hole
11051051	GS 40KL26	80/200	500ml	3.5mm	GL45	26mm hole
11051060	GS 50KL20	90/250	1000ml	3.5mm	GLS80	20mm hole
11051061	GS 50KL26	90/250	1000ml	3.5mm	GLS80	26mm hole
11051070	GS 60KL20	100/300	1300ml	3.5mm	GLS80	20mm hole
11051071	GS 60KL26	100/300	1300ml	3.5mm	GLS80	26mm hole

CYLINDRICAL-SHAPED STAINLESS STEEL VESSEL

Sales No.	Product	Ø/H (mm)	Process volume	Thickness	Weight	Description
-----------	---------	----------	----------------	-----------	--------	-------------

With hook grips



11052001	GS100-1	105/150	1000ml	1.0mm	412g	-
11052002	GS100-2	135/170	2000ml	1.2mm	580g	-
11052003	GS100-3	165/180	3000ml	1.2mm	725g	-
11052004	GS100-4	185/185	4000ml	1.2mm	872g	-
11052005	GS100-5	185/225	5000ml	1.2mm	998g	-
11052006	GS100-6	185/265	6000ml	2.0mm	1122g	-
11052008	GS100-8	210/270	8000ml	2.0mm	1350g	-
11052010	GS100-10	230/280	10000ml	2.0mm	1550g	-

With hook grips and a **cover with a drop handle**



11052101	GS100-1.C	105/150	1000ml	1.0mm	495g	-
11052102	GS100-2.C	135/170	2000ml	1.2mm	720g	-
11052103	GS100-3.C	165/180	3000ml	1.2mm	905g	-
11052104	GS100-4.C	185/185	4000ml	1.2mm	1099g	-
11052105	GS100-5.C	185/225	5000ml	1.2mm	1225g	-
11052106	GS100-6.C	185/265	6000ml	2.0mm	1349g	-
11052108	GS100-8.C	210/270	8000ml	2.0mm	1671g	-
11052110	GS100-10.C	230/280	10000ml	2.0mm	1922g	-

With hook grips, equipped with a **baffles part** inset and a **cover with a drop handle**



11052201	GS100-1.C.B.	105/150	1000ml	1.0mm	-	-
11052202	GS100-2.C.B.	135/170	2000ml	1.2mm	-	-
11052203	GS100-3.C.B.	165/180	3000ml	1.2mm	-	-
11052204	GS100-4.C.B.	185/185	4000ml	1.2mm	-	-
11052205	GS100-5.C.B.	185/225	5000ml	1.2mm	-	-
11052206	GS100-6.C.B.	185/265	6000ml	2.0mm	-	-
11052208	GS100-8.C.B.	210/270	8000ml	2.0mm	-	-
11052210	GS100-10.C.B.	230/280	10000ml	2.0mm	-	-

Dispersing aggregates for PT 10-35 GT.

Your applications, our solution.

Kinematica aggregates solve all problems you are faced with every day in the laboratory. Using our Click & Go quick release makes the changing of aggregates very easy.



EC «STANDARD DISPERSING AGGREGATE»

Design

The universal geometry uses two rows of teeth, is suitable for a large spectrum of laboratory applications, and it is reliable and efficient.

Selection and applications

- All standard dispersing tasks
- Grinding of animal and human tissue samples in a variety of fluids and volumes
- Sample preparation for the extraction and dissolution of organic materials
- Sample preparation for medical diagnostic procedures as well as DNA analysis
- Extractions of systems/substances from vegetable-derived samples
- Disruption of animal and human cells
- Deagglomeration of united cell structures
- Intensive mixing



M «OUTSIDE CUTTING BLADES»

Design

Outside blades pre-cut samples that are larger than the rotors diameter. Subsequently, they can be dispersed inside the generator.

Selection and applications

- Dispersing of large samples made simple
- All standard dispersing applications similar to EC aggregate



Z «Z-DESIGN»

Design

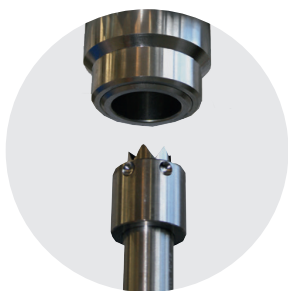
Breaking up of hard samples, with integrated V-notch technology. Additional, integrated holes for cleaning.

Selection and applications

- Hard and brittle material
- Sweet corn and grain
- Breaking, opening and dispersing of pills
- Breaking, hard grains

Sales No.	Description	ø / length mm	Volume ml	max. Tip speed m/s
EC «STANDARD DISPERSING AGGREGATE»				
11030297	PT-DA 05 / 2EC-F078	5 / 78	0.1 – 5	5
11030298	PT-DA 07 / 2EC-F101	7 / 101	0.3 – 10	8
11030299	PT-DA 12 / 2EC-F154	12 / 154	3 – 250	14
11030302	PT-DA 20 / 2EC-F193	20 / 193	20 – 2000	22
11030305	PT-DA 30 / 2EC-F250	30 / 250	100 – 4000	30
11030311	PT-DA 30 / 4EC-F250	30 / 250	100 – 4000	30
11030313	PT-DA 36 / 2EC-F250	36 / 250	200 – 4500	34
11030317	PT-DA 36 / 4EC-F250	36 / 250	200 – 4500	34

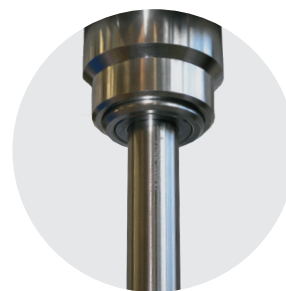
Sales No.	Description	ø / length mm	Volume ml	max. Tip speed m/s
M «OUTSIDE CUTTING BLADES»				
11030300	PT-DA 12 / 2MEC-F154	12 / 154	3 – 250	14
11030303	PT-DA 20 / 2MEC-F193	20 / 193	20 – 2000	22
11030307	PT-DA 30 / 2MEC-F250	30 / 250	100 – 4000	30
11030308	PT-DA 30 / 2MG-F273*	30 / 273	100 – 4000	30
11030315	PT-DA 36 / 2MEC-F250	36 / 250	200 – 4500	34
*M-design aggregate in gas-tight model				
Z «Z-DESIGN»				
11030310	PT-DA 30 / 2ZEC-F250	30 / 250	100 – 4000	29



Step 1



Step 2



Step 3



W «W-DESIGN»

Design

The W-design prevents fibrous, stringy or solid samples from clogging the rotor/stator.

Selection and applications

- Dispersing fibrous, stringy or solid samples (e.g., pieces of meat)
- All standard dispersing applications similar to EC aggregate



G «GAS TIGHT»

Design

Integrated mechanical seals.

Selection and applications

- Under pressure or vacuum
- Preventing air from being added to emulsions
- Corrosive acid mixtures



DEC «DISSOLVER»

Design

A processing head with teeth. The product is radially accelerated.

Selection and applications

- Fast mixing and homogenizing of solids in liquid
- Processing of highly viscous products



B «BIOTRONA® HIGH-TURBULENCE MIXER»

Design

High-turbulence mixing head with the least possible shear forces and energy inputs.

Selection and applications

- Quick removal and suspension of solid particles; also suitable for high viscosity applications



TiN «TITANIUM NITRATED» - UPGRADE

Design

Rotor and/or stator with up to three rows of teeth with a titanium nitrated (TiN) coating.

Selection and applications

- All dispersing applications with abrasive samples

Sales No.	Description	ø /length mm	Volume ml	max. Tip speed m/s
W «W-DESIGN»				
11030301	PT-DA 12 / 2WEC-F154	12 / 154	3 – 250	14
11030304	PT-DA 20 / 2WEC-F193	20 / 193	20 – 2000	22
11030294	PT-DA 20 / 2WG-F210*	20 / 210	20 – 2000	30
11030309	PT-DA 30 / 2WEC-F250	30 / 250	100 – 4000	30
11030345	PT-DA 30 / 2WMEC-F250**	30 / 250	100 – 4000	30
11030319	PT-DA 36 / 2WEC-F250	36 / 250	200 – 4500	34
11030346	PT-DA 36 / 2WMEC-F250**	36 / 250	100 – 4500	34
	*W-design aggregate in gas-tight model			
	** W-design aggregate with knives			
TiN «TITANIUM NITRATED» – UPGRADE				
11035050	TiN rotor for the selected dispersing aggregate			ø 12 – 36mm
11035150	TiN stator for the selected dispersing aggregate			ø 12 – 36mm

Sales No.	Description	ø / length mm	Volume ml	max. Tip speed m/s
G «GAS TIGHT»				
11030295	PT-DA 20 / 2G-F210	20 / 210	20 - 2000	22
11030306	PT-DA 30 / 2G-F273	30 / 273	100 - 4000	30
11030312	PT-DA 30 / 4G-F273	30 / 273	100 - 4000	30
11030316	PT-DA 36 / 2G-F273	36 / 273	200 - 4500	34
11030318	PT-DA 36 / 4G-F273	36 / 273	200 - 4500	34
DS «DISSOLVER»				
11030344	PT-DA 30 / DEC-F250	30 / 250	500 - 10000	30
B «BIOTRONA® HIGH-TURBULENCE MIXER»				
11030355	PT-DA 07 / BEC-F101	07 / 101	10 - 100	7
11030354	PT-DA 12 / BEC-F154	12 / 154	50 - 500	12
11030296	PT-DA 20 / BEC-F193	20 / 193	20 - 2000	21
11030314	PT-DA 36 / BEC-F250	36 / 250	500 - 10000	34

Order information and accessories.

Authorized extension of your system.

Depending on your specific requirements, it is possible to expand the PT 10-35 GT drive with our functional accessories. Our expert personnel will be happy to assist you and answer all the questions you might have.

DRIVES

Sales No.	Product	Description
Drive Unit		
11010104	PT 10-35 GT, 230 V	Drive Unit with EU-power cable
11010105	PT 10-35 GT, 230 V	Drive Unit with CH-power cable
11010106	PT 10-35 GT, 230 V	Drive Unit with UK-power cable
11010103	PT 10-35 GT, 100 – 120 V	Drive Unit with power cable
Drive Unit is sold with stand and accessories		
11090070	PT 10-35 GT, 230 V, EU, Package	Drive Unit. EU-Power cable, stand ST-P 10 / 600 with vessel holder and safety ring
11090071	PT 10-35 GT, 230 V, CH, Package	Drive Unit. CH-Power cable, stand ST-P 10 / 600 with vessel holder and safety ring
11090073	PT 10-35 GT, 230 V, UK, Package	Drive Unit. UK-Power cable, stand ST-P 10 / 600 with vessel holder and safety ring
11090072	PT 10-35 GT, 100-120 V, Package	Drive Unit. Power cable, stand ST-P 10 / 600 with vessel holder and safety ring



ADAPTER

Sales No.	Product	Description
11035001	Adapter PT-DA / PTA (F / A)	This adapter connects older A-coupling dispersing aggregates such as PT-K / PT-G with F-coupling drive units.

STANDS

Sales No.	Product	Description
11040050	ST-P 10/600	Plate stand for safe and easy height adjustment of the drive unit. The head clamp with a knurled nut is secured to drive unit and prevents rotation around the extension. Weight: 2.90 kg
11040051	ST-P 20/600	Plate stand with two support rods. The drive unit's height can be adjusted. For more security, the drive unit cannot be adjusted horizontally. Weight: 4.00 kg - The drive can only be used with the optionally available extension rod (Sales No. 11045051)

Electric plate stand

Electric plate stand with lifting telescopic bar for more ease of use. Incl. Incl. operating device and anti-slipping pad for vessel. The electronics are designed for ambient temperatures of +5°C to +40°C and were tested per EN 60335-1 and UL 962. Weight: 11 kg

11040033	ST-P 14/590+500, 230 V	With EU-power cable
11040036	ST-P 14/590+500, 230 V	With CH-power cable
11040037	ST-P 14/590+500, 230 V	With UK-power cable
11040034	ST-P 14/590+500, 100 - 120 V	With power cable



STAND ACCESSORIES

Vessel holder

Sales No.	Product	Description
11045011	Vessel holder	For fixing any dispersing vessels, with guide for ST-P 20/600
11045013	Vessel holder	For fixing any dispersing vessels, with guide for ST-P 10/600
11036005	Vessel holder	For fixing any dispersing vessels, with guide for ST-P 14/590 + 500

Safety ring

11045031	Safety positioning ring	For ST-P 20/600. The safety ring prevents uncontrolled lowering of the drive unit. Can also be used to fixing the drive unit height.
11045035	Safety positioning ring	For ST-P 10/600. The safety ring prevents uncontrolled lowering of the drive unit. Can also be used to fixing the drive unit height.

Boom rods

11045051	Boom rod	For PT 10-35 GT required for use with ST-P 20/600
11036002	Shortened boom rod	For PT 10-35 GT required for use with ST-P 14/590+500



Our mission. Your solution.

Homogenizing perfected: for every industry.

Kinematica's broad portfolio of solutions can address almost every dispersing application for the pharmaceutical, cosmetic, chemical, food and life science industry. Innovative powder-induction systems, solutions for completely sterile environments, or fully-compliant ATEX architecture are just some examples of the broad portfolio that Kinematica can offer with true scalability from pilot-plant to large plant configurations.

Our state-of-the-art technology, in addition to a professional consulting and engineering suite of services, can address a variety of processes such as blending / mixing / stirring, emulsifying, deagglomerating, foaming, crushing and homogenizing with particle size reduction from a few micrometers down to nanometers in size: the proprietary design and innovative geometry of our aggregates / generators can downsize and provide perfect statistical particle distribution for the finest emulsions / suspensions and foam dispersions.



HEADQUARTERS

Kinematica AG

Luzernerstrasse 147a
CH-6014 Luzern
Switzerland

Phone +41 41 259 65 65

Fax +41 41 259 65 75

info@kinematica.ch

kinematica.ch

EUROPE

Kinematica GmbH / Germany / Phone +49 7634 504 800 0 / info@kinematica.de

–

NORTH AND SOUTH AMERICA

Kinematica, Inc. / USA / Phone +1 631 750 6653 / info@kinematica-inc.com

–

RUSSIA AND CIS

Kinematica AG / Switzerland / Phone +41 41 259 65 65 / info@kinematica.ch

–

GREATER CHINA

Kinematica Asia Limited / Hong Kong / Phone +852 249 769 65 / info@kinematica.ch



PHARMA



CHEMICAL



COSMETICS



FOOD



LIFE SCIENCE